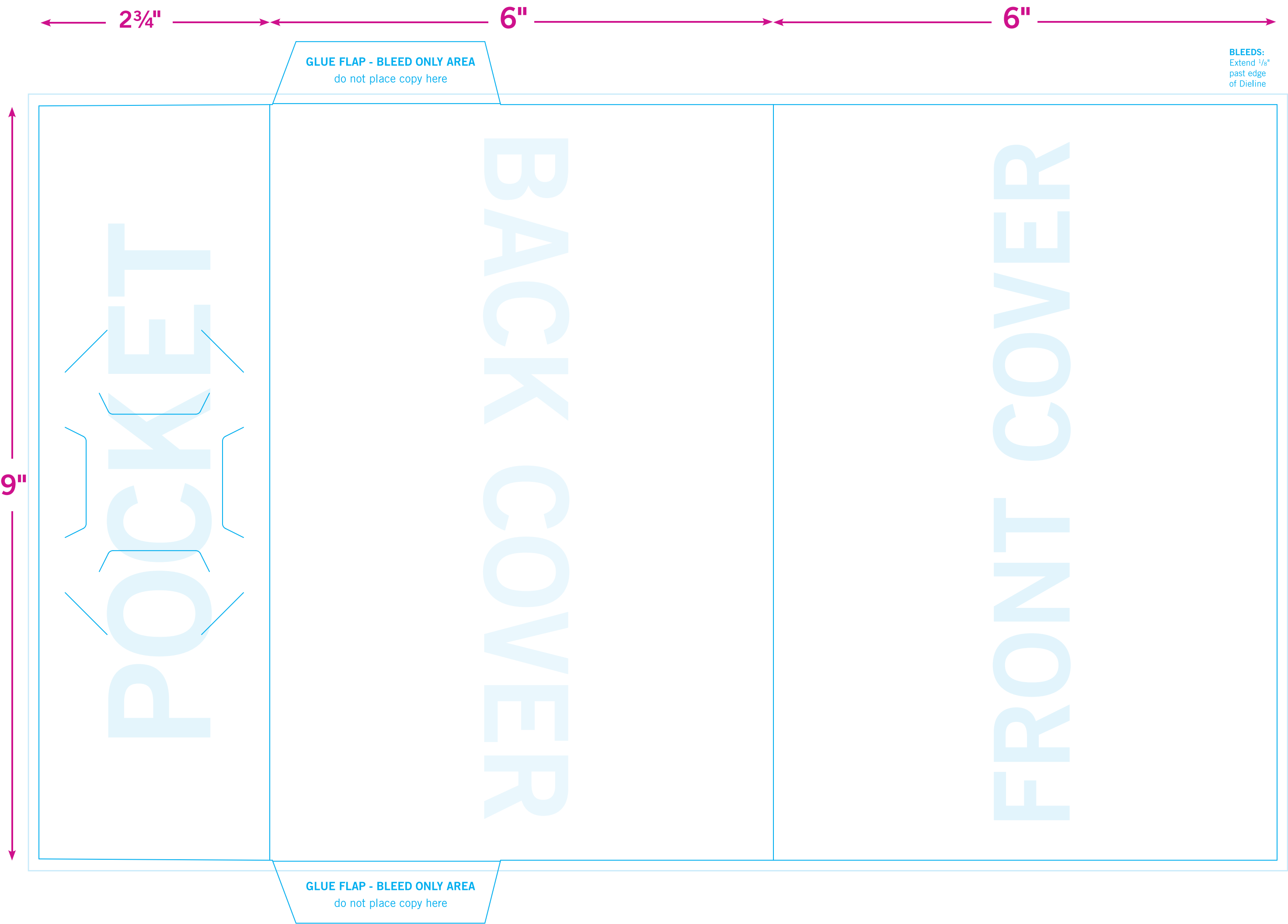
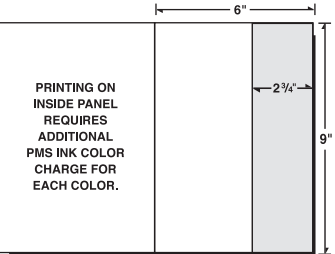


# FRONT SIDE OF PRINTED SHEET



# SECOND SIDE OF SHEET

\*PRINTING ON SECOND SIDE REQUIRES ADDITIONAL COST



INSIDE OF FRONT COVER

INSIDE OF BACK COVER

Printing on Inside Panels  
Requires Second Side  
Print Charges

Shaded Areas Will Be  
Covered When Product is Folded.  
Do not place important copy here.

INSIDE OF  
POCKET