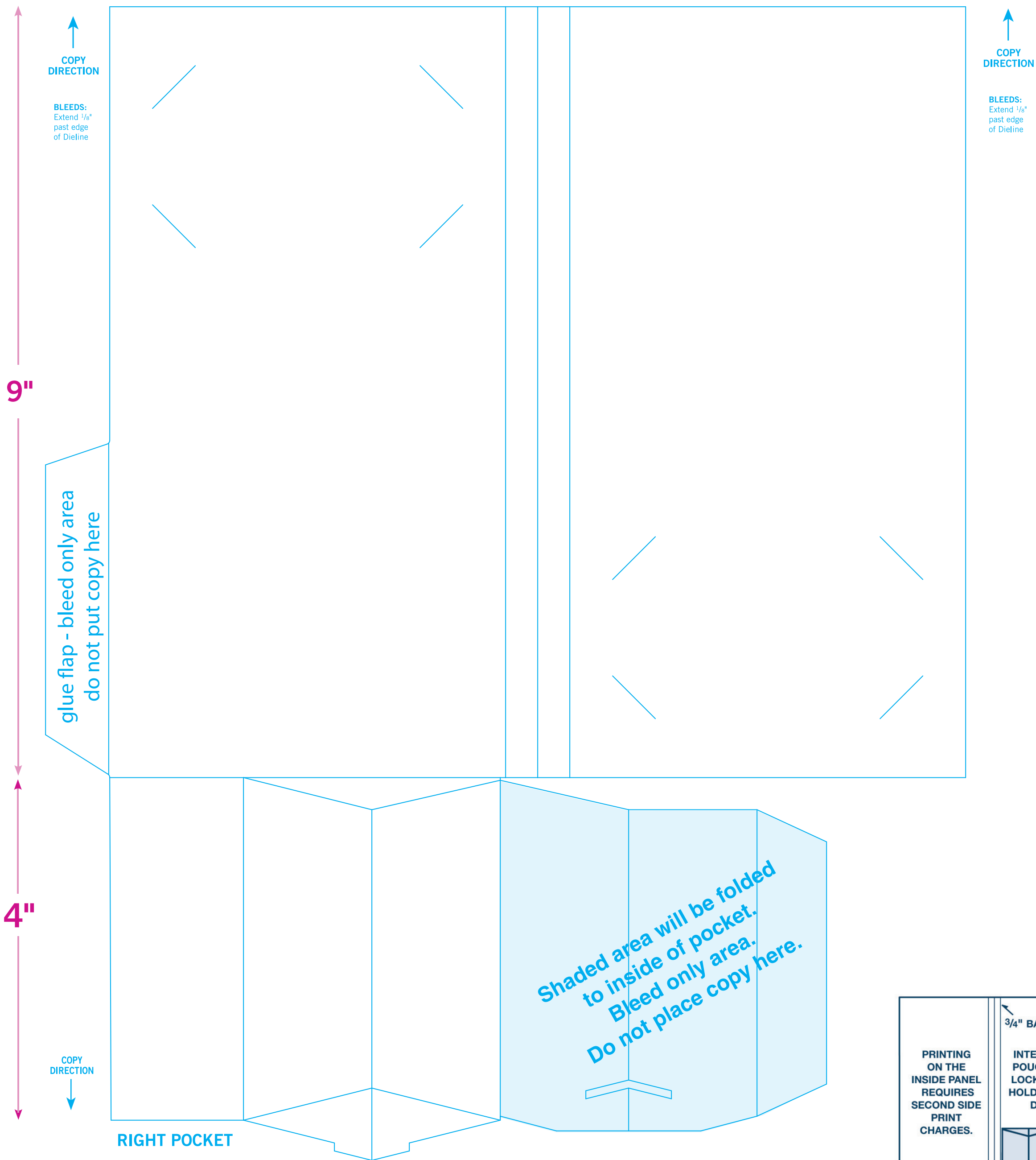


$4\frac{5}{8}"$ BACK COVER $\frac{3}{4}"$ BACKBONE $4\frac{5}{8}"$ FRONT COVER



COPY DIRECTION

BLEEDS:
Extend $\frac{1}{8}"$
past edge
of Dieline

COPY DIRECTION

BLEEDS:
Extend $\frac{1}{8}"$
past edge
of Dieline

glue flap - bleed only area
do not put copy here

Shaded area will be folded
to inside of pocket.
Bleed only area.
Do not place copy here.

NOTE: To avoid cracking, do not place solids
or heavy coverage on Flash Drive Pouch.

