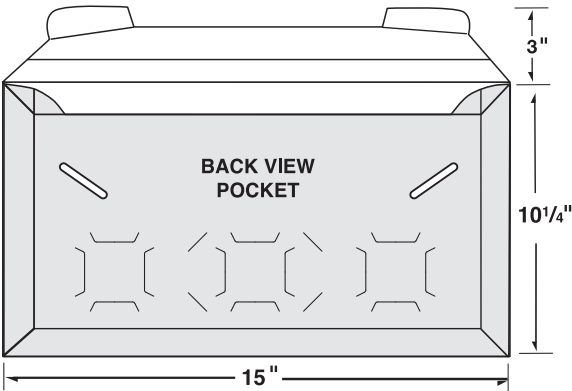
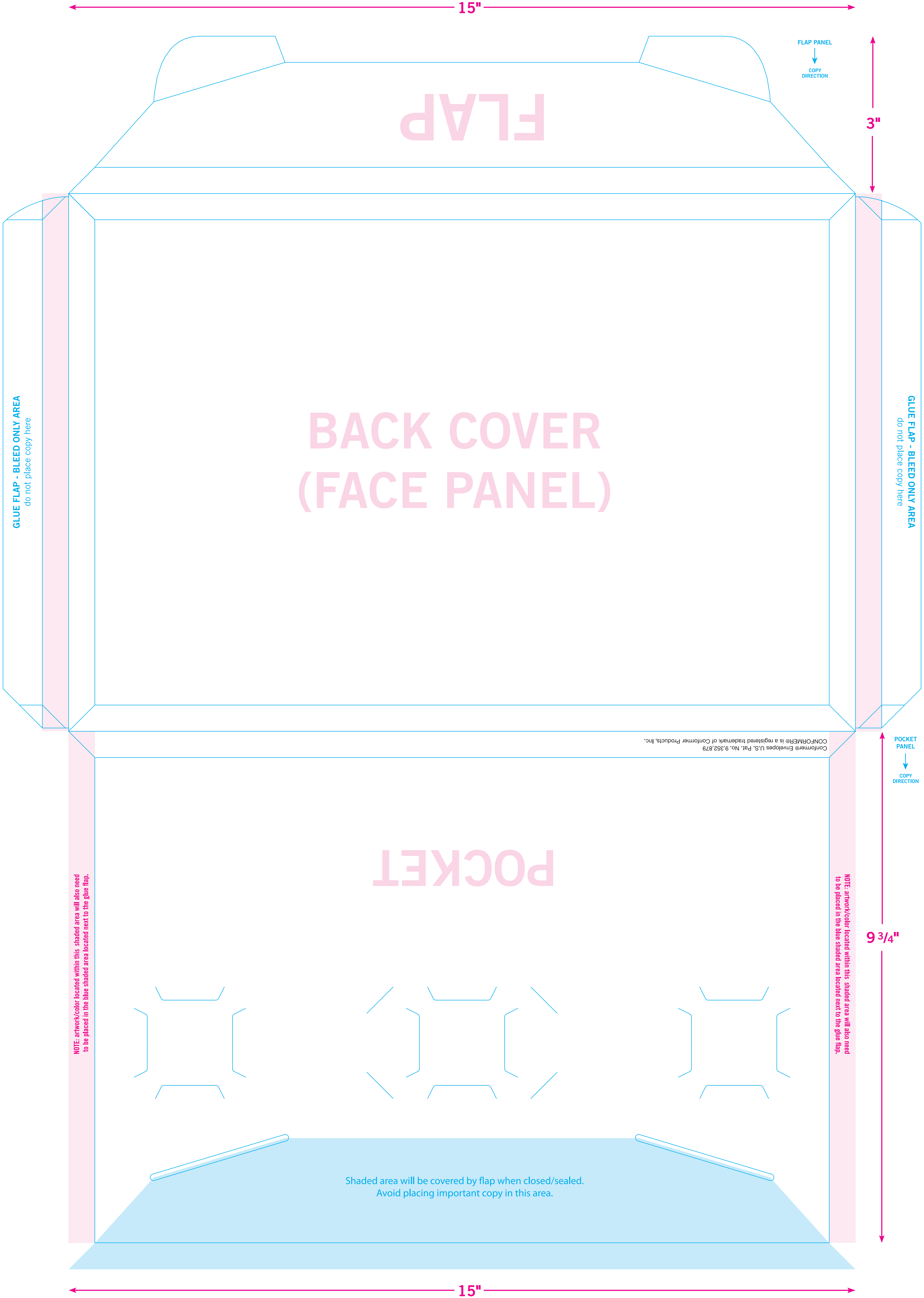


16-44-CON



Designer Tip:
Request a sample before beginning design layout.
You may also find it helpful to print a reduced copy,
and fold it up. This mini-mockup will help you
properly place and arrange artwork.

BLEEDS:
Extend 1/8"
past edge
of Dieline



FACE PANEL
↑
COPY
DIRECTION

GLUE FLAP - BLEED ONLY AREA
do not place copy here

POCKET
PANEL
↓
COPY
DIRECTION

9 3/4"

10 1/4"

3"

FLAP PANEL
↓
COPY
DIRECTION

Conform® Envelopes U.S. Pat. No. 9,352,879
CONFORMER® is a registered trademark of Conformer Products, Inc.

POCKET

BACK COVER
(FACE PANEL)

FLAP

NOTE: artwork/color located within this shaded area will also need
to be placed in the blue shaded area located next to the glue flap.

NOTE: artwork/color located within this shaded area will also need
to be placed in the blue shaded area located next to the glue flap.

Shaded area will be covered by flap when closed/sealed.
Avoid placing important copy in this area.