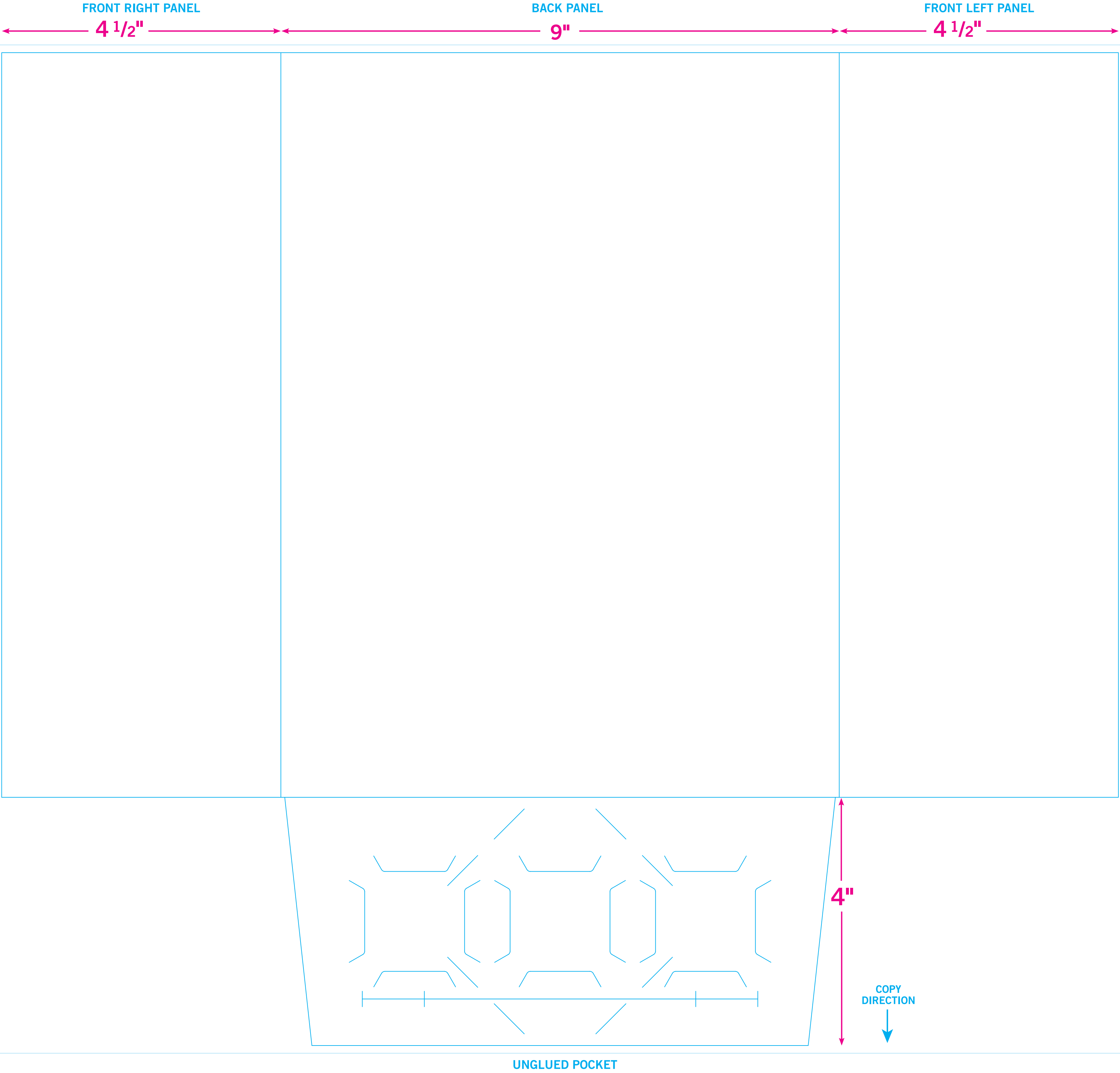
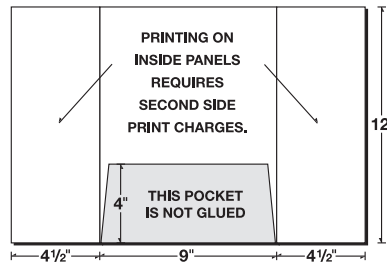
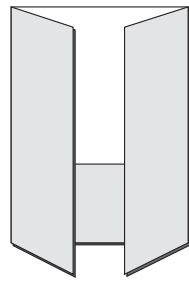


FRONT SIDE OF PRINTED SHEET



08-07



COPY DIRECTION

BLEEDS:
Extend 1/8"
past edge
of Dieline

SECOND SIDE OF PRINTED SHEET

INSIDE LEFT PANEL

INSIDE CENTER PANEL

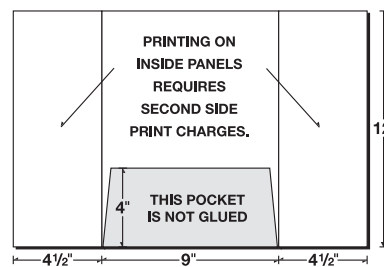
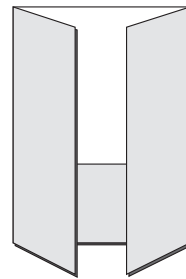
INSIDE RIGHT PANEL

4 1/2"

9"

4 1/2"

08-07



12"

COPY
DIRECTION

BLEEDS:
Extend 1/8"
past edge
of Deline

COPY
DIRECTION

BLEEDS:
Extend 1/8"
past edge
of Deline

Printing on Inside Panels
Requires Second Side
Print Charges

Shaded Area Will Be Covered
When Product is Folded

Inside of Unglued Pocket

4"

COPY
DIRECTION